

## Supplementary

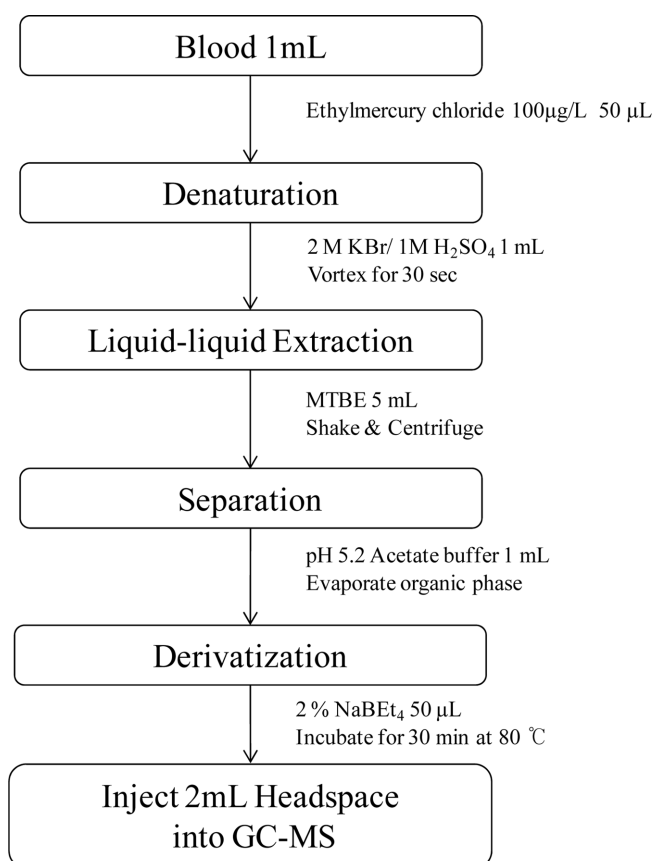
## Correlation Between Total Mercury and Methyl Mercury-In Whole Blood of South Korean

Seon A Jung,<sup>†,‡</sup> Dayoung Chung,<sup>†,§</sup> Jiwon On,<sup>†,§</sup> Myeong Hee Moon,<sup>‡</sup> Jeongae Lee,<sup>†</sup> and Heesoo Pyo<sup>†,\*</sup><sup>†</sup>Molecular Recognition Research center, Korea Institute of Science and Technology, Seoul 136-791, Korea

\*E-mail: phs3692@kist.re.kr

<sup>‡</sup>Department of Chemistry, Yonsei University, Seoul 120-749, Korea<sup>§</sup>Department of Chemistry, Korea University, Seoul 136-701, Korea

Received October 23, 2012, Accepted January 14, 2013

**Figure 1.** Sample preparation method for the analysis of methyl mercury in whole blood sample.