

## Supplementary Information

## Silica Chloride-Catalyzed Microwave-Assisted Efficient and Selective One-Pot Synthesis of Amides from Aldehydes

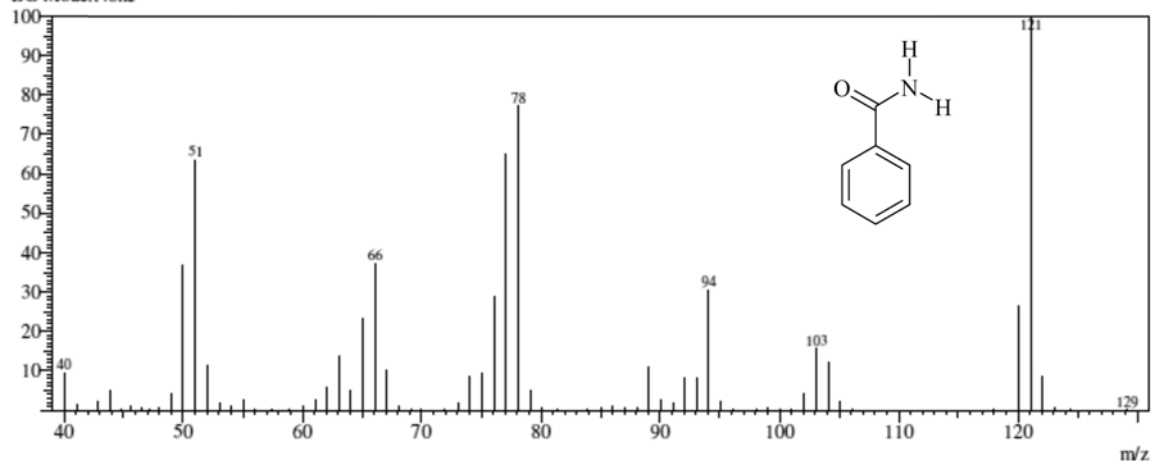
Bandita Datta and M. A. Pasha\*

Department of Studies in Chemistry, Central College Campus, Bangalore University, Bengaluru -560001, India

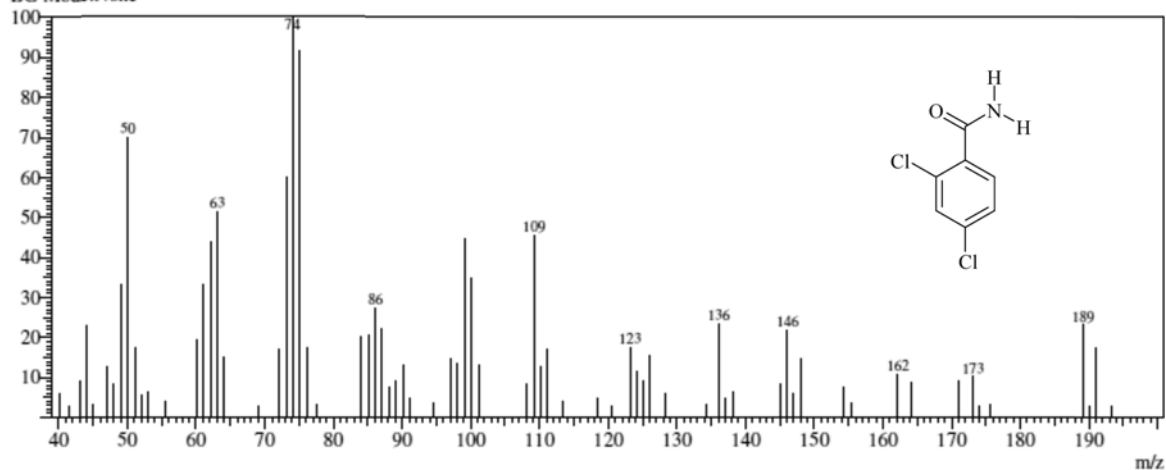
\*E-mail: m\_af\_pasha@ymail.com

Received January 11, 2012, Accepted March 30, 2012

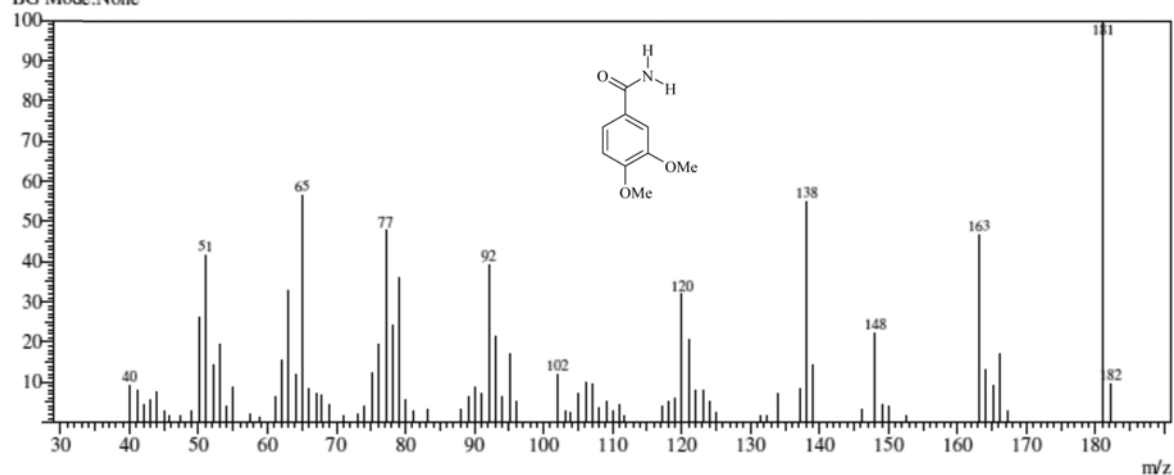
Line#:2 R.Time:5.1(Scan#:375)  
MassPeaks:70 BasePeak:121(2919451)  
RawMode:Single 5.1(375)  
BG Mode:None



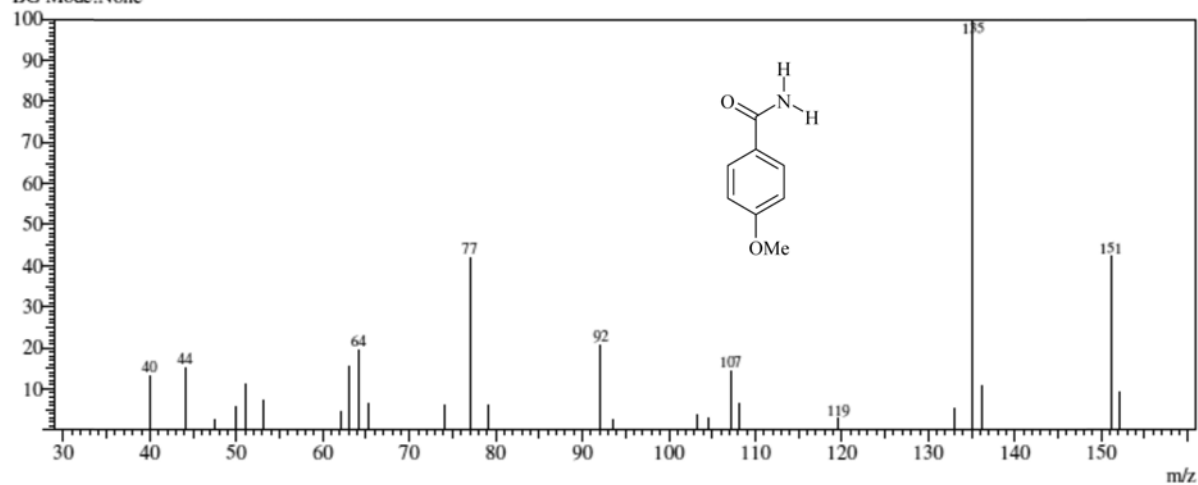
Line#:3 R.Time:9.4(Scan#:888)  
MassPeaks:71 BasePeak:74(37816)  
RawMode:Single 9.4(888)  
BG Mode:None



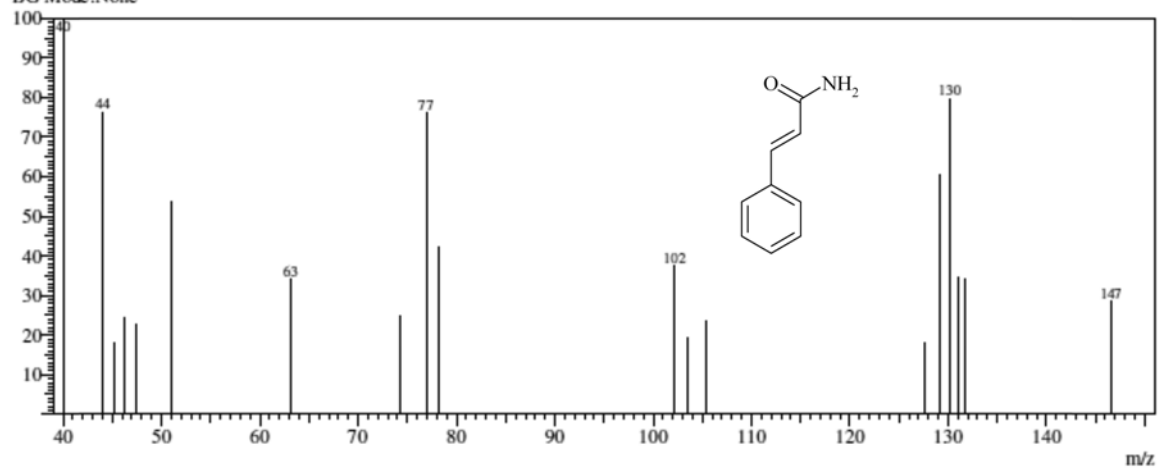
Line#:2 R.Time:11.5(Scan#:1138)  
MassPeaks:84 BasePeak:181(77625)  
RawMode:Single 11.5(1138)  
BG Mode:None



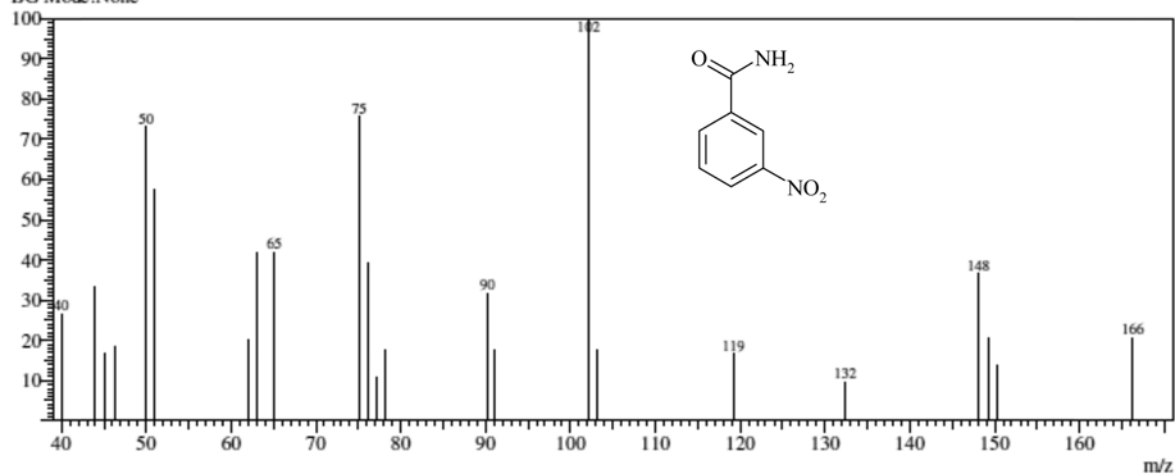
Line#:2 R.Time:12.7(Scan#:1285)  
MassPeaks:25 BasePeak:135(43068)  
RawMode:Single 12.7(1285)  
BG Mode:None



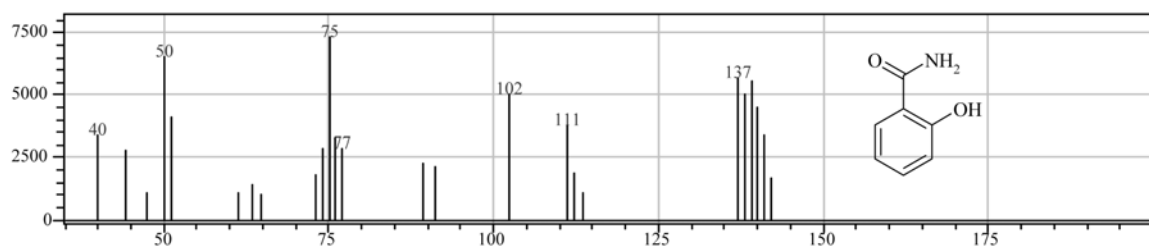
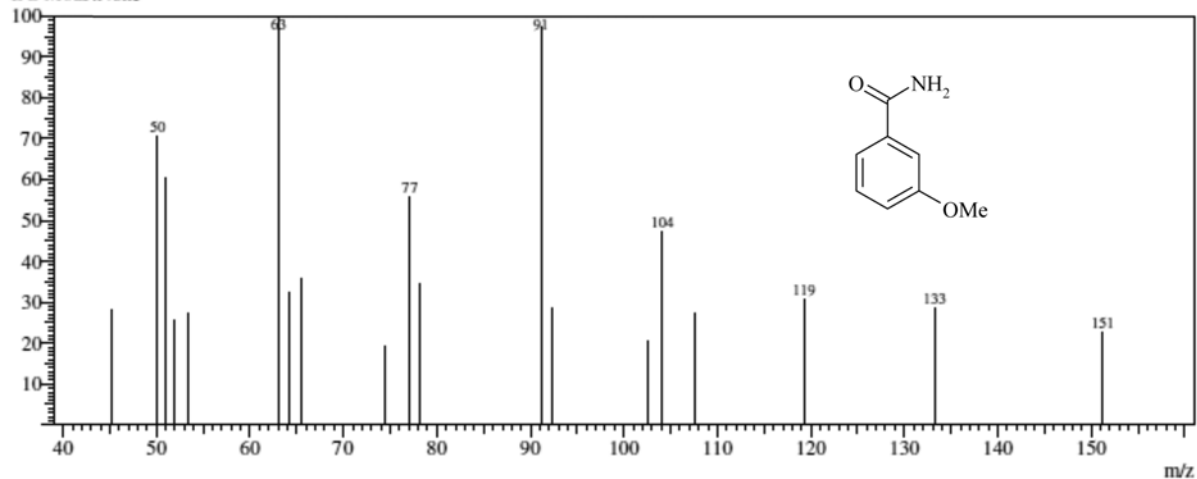
Line#:4 R.Time: 10.1(Scan#:976)  
MassPeaks:19 BasePeak:40(6117)  
Raw Mode:Single 10.1(976)  
BG Mode:None



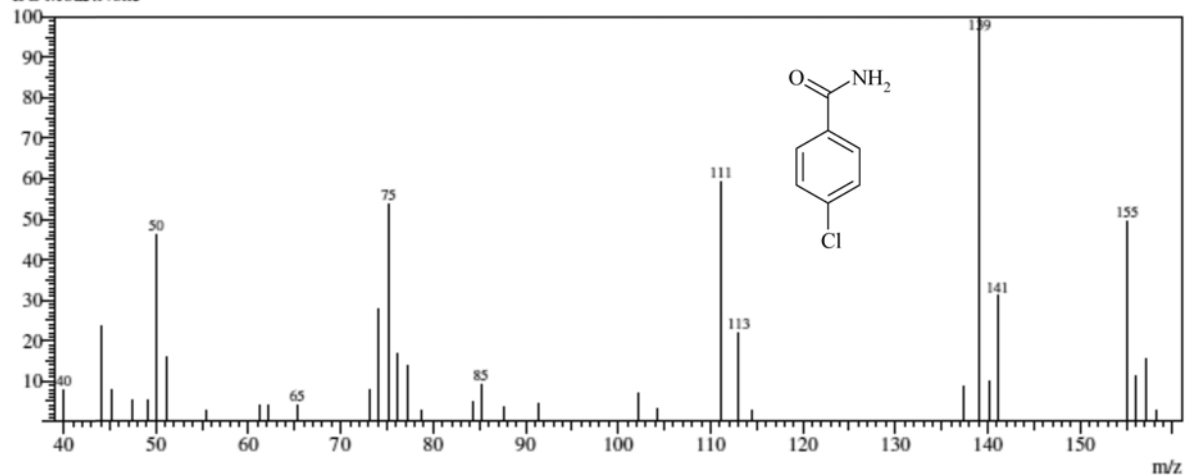
Line#:2 R.Time: 12.3(Scan#:1241)  
MassPeaks:23 BasePeak:102(12557)  
Raw Mode:Single 12.3(1241)  
BG Mode:None



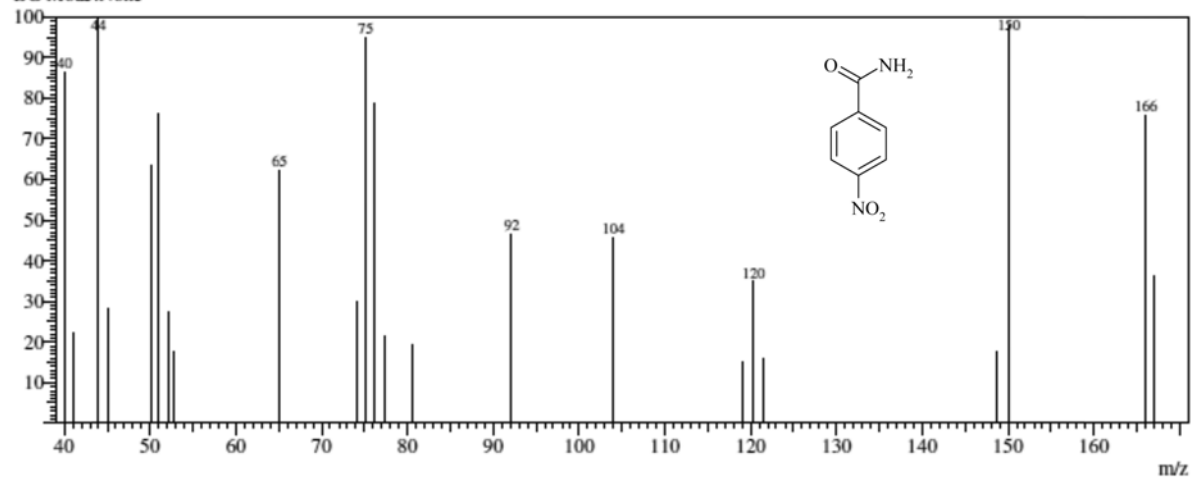
Line#:2 R.Time:8.7(Scan#:801)  
MassPeaks:19 BasePeak:63(5283)  
RawMode:Single 8.7(801)  
BG Mode:None



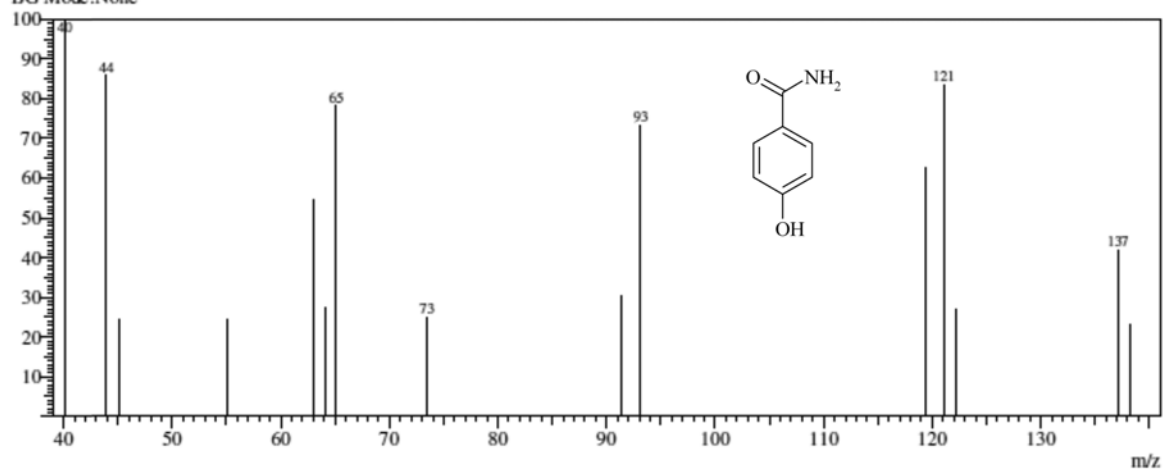
Line#:2 R.Time:11.3(Scan#:1113)  
MassPeaks:34 BasePeak:139(38427)  
RawMode:Single 11.3(1113)  
BG Mode:None



Line#:6 R.Time:16.5(Scan#:1744)  
MassPeaks:23 BasePeak:44(7135)  
Raw Mode:Single 16.5(1744)  
BG Mode:None



Line#:2 R.Time:18.6(Scan#:1993)  
MassPeaks:15 BasePeak:40(4765)  
Raw Mode:Single 18.6(1993)  
BG Mode:None



Line#:2 R.Time:16.3(Scan#:1721)  
MassPeaks:12 BasePeak:40(5743)  
RawMode:Single 16.3(1721)  
BG Mode:None

