

Supplementary Material

New Unsymmetric Dinuclear Copper(II) Complexes of Trans-disubstituted Cyclam Derivatives: Spectral, Electrochemical, Magnetic, Catalytic, Antimicrobial, DNA Binding and Cleavage Studies

R. Prabu, A. Vijayaraj, R. Suresh, L. Jagadish,[†] V. Kaviyarasan,[†] and V. Narayanan^{*}

Department of Inorganic Chemistry, School of Chemical Sciences, [†]Centre for Advanced Studies in Botany, University of Madras, Guindy Maraimalai Campus, Chennai-600 025, India. *E-mail: vnnara@yahoo.co.in

Received January 28, 2011, Accepted March 30, 2011

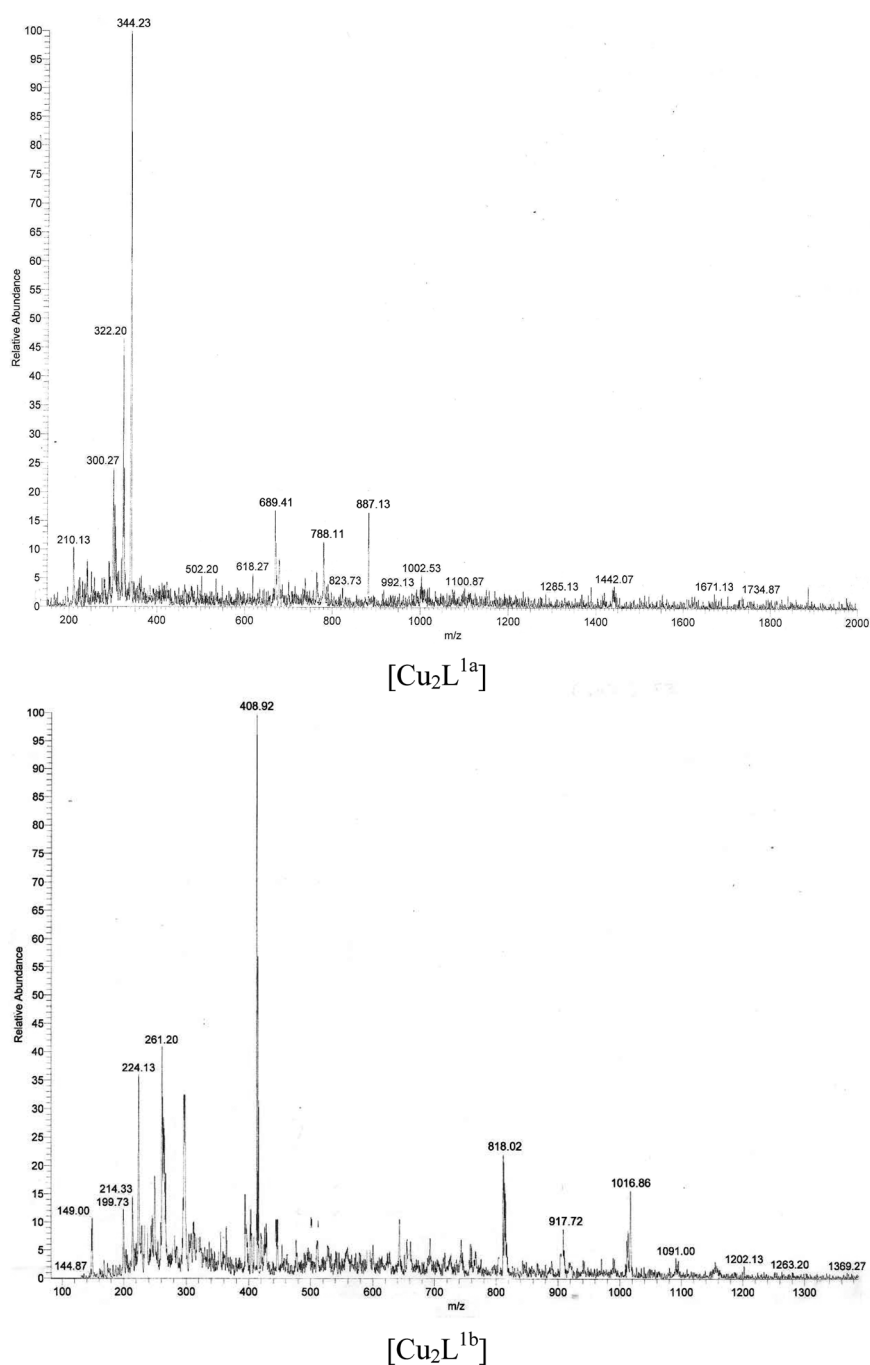
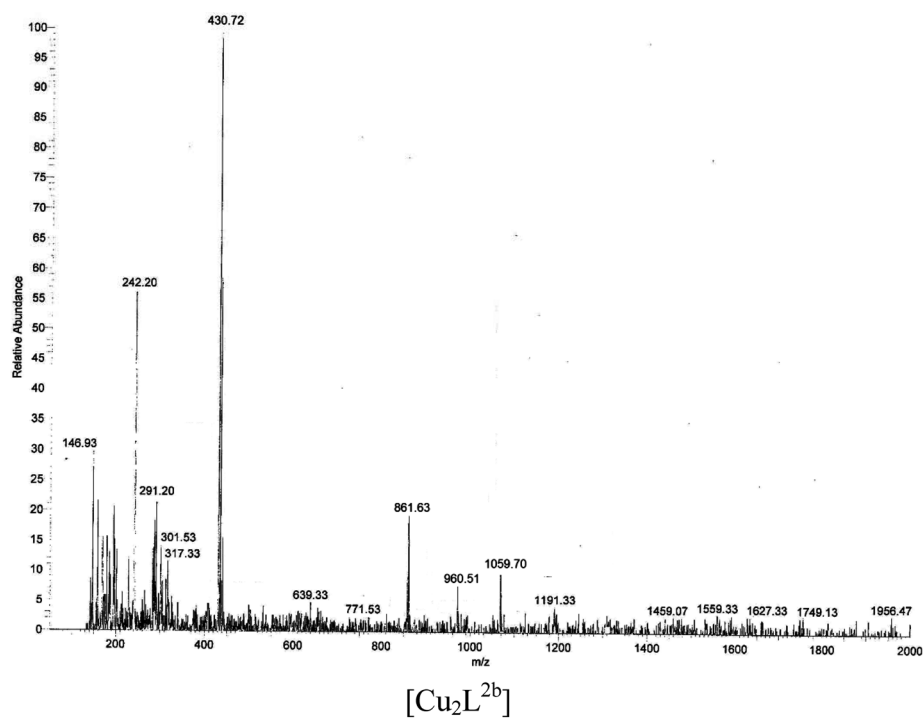
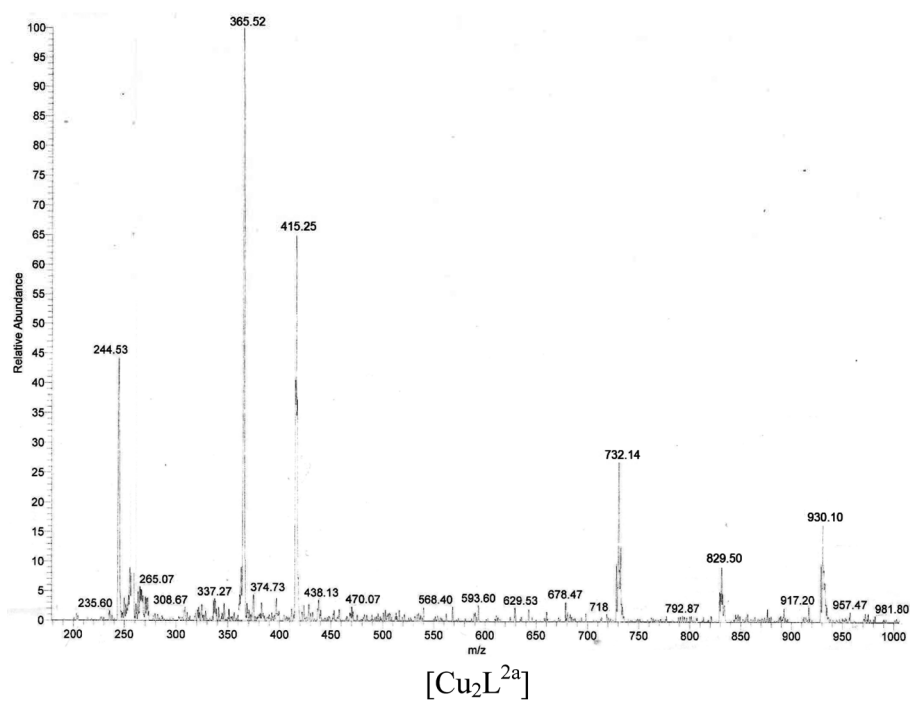


Figure 1. The ESI-mass spectra of $[\text{Cu}_2\text{L}^{1a-3a}]$ and $[\text{Cu}_2\text{L}^{1b-3b}]$.

**Figure 1.** Continued

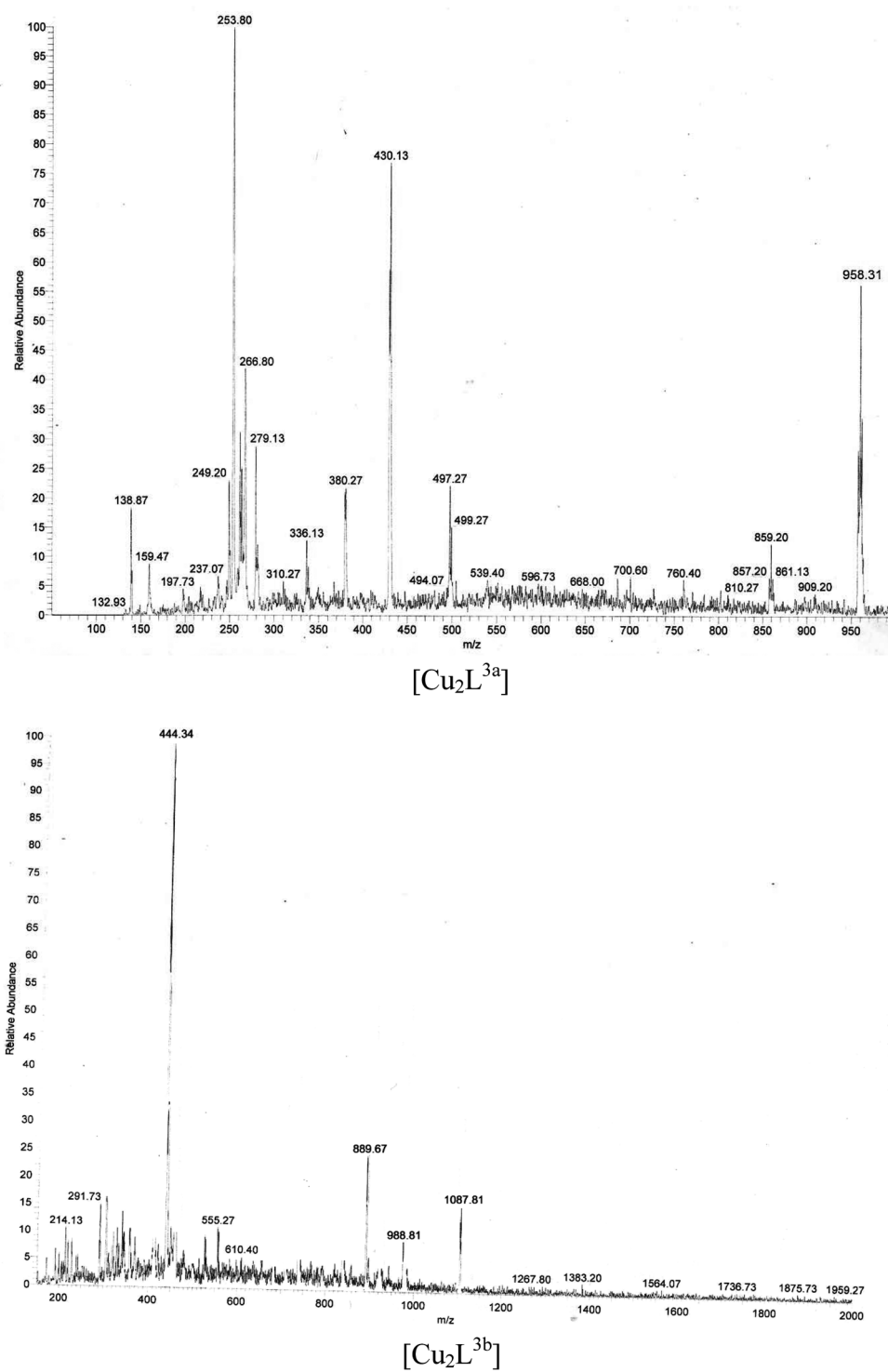


Figure 1. Continued